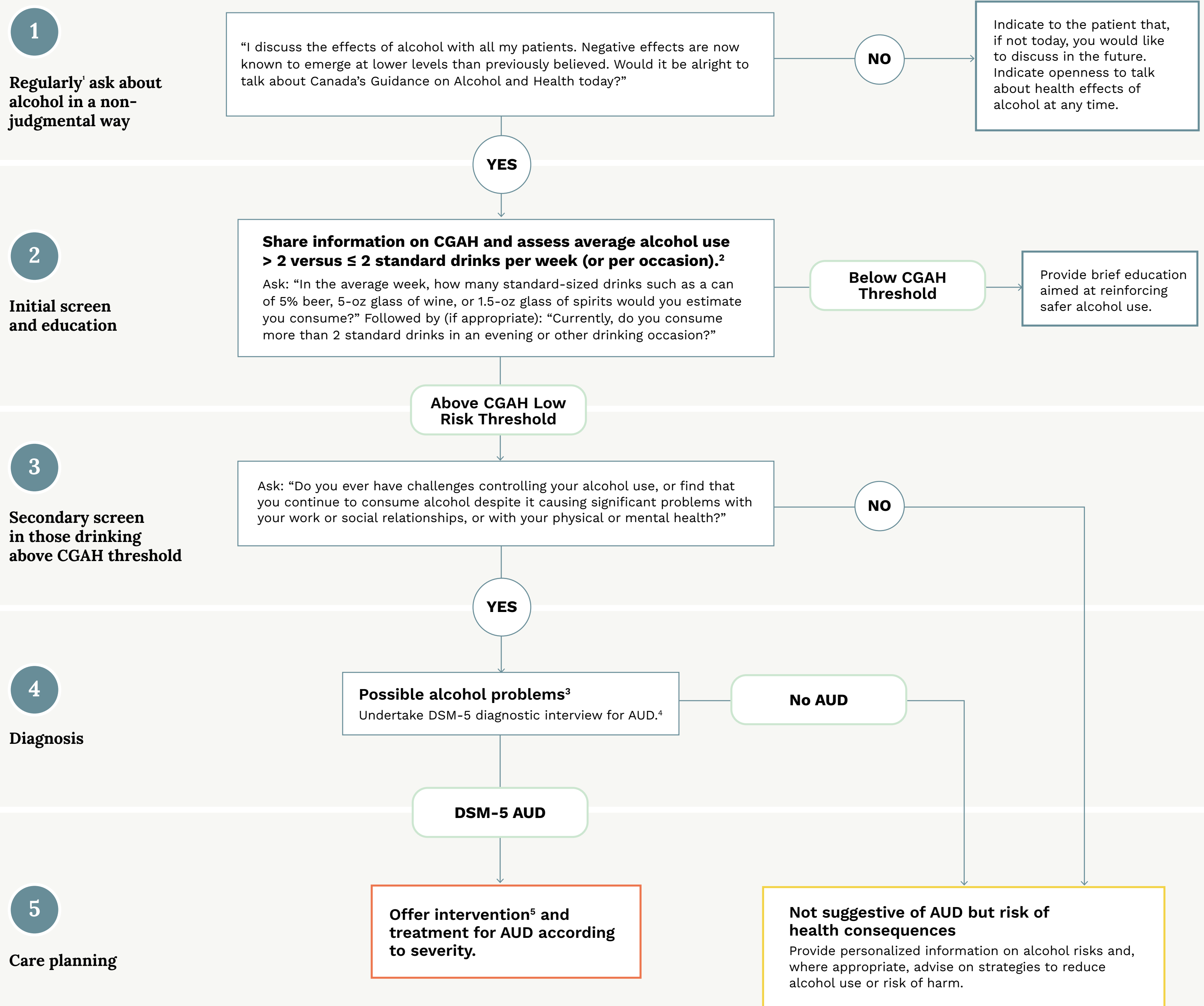


Screening for Health Risks Attributable to Alcohol



1. Alcohol use should be assessed regularly and whenever problems associated with alcohol use (e.g., driving under the influence charge) or potentially associated with alcohol use (e.g., hypertension, elevated liver enzymes, insomnia, low mood) are present. Considerations for screening frequency and clinical indications for screening are described in the full High Risk Drinking and Alcohol Use Disorder guideline and Appendix 1, Section 2.

2. CGAH = Canada’s Guidance on Alcohol and Health. CGAH risk threshold is in reference to drinks per week and/or drinks per individual drinking episode (see Box 1).

3. Details on conducting a diagnostic interview are described in the full High Risk Drinking and Alcohol Use Disorder guideline. See also eTable 6.

4. DSM-5 = Diagnostic and Statistical Manual of Mental Disorders 5th revision; AUD = Alcohol Use Disorder.

5. Persons with AUD should be provided personalized information and advice as per those without AUD (level 5 right column) as well as AUD treatment according to severity as described in the full CRISM guideline.